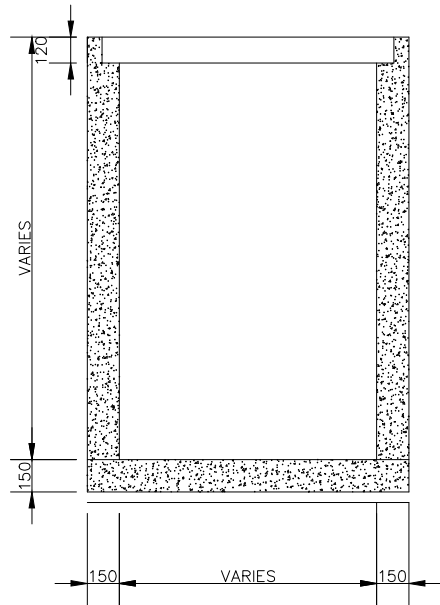


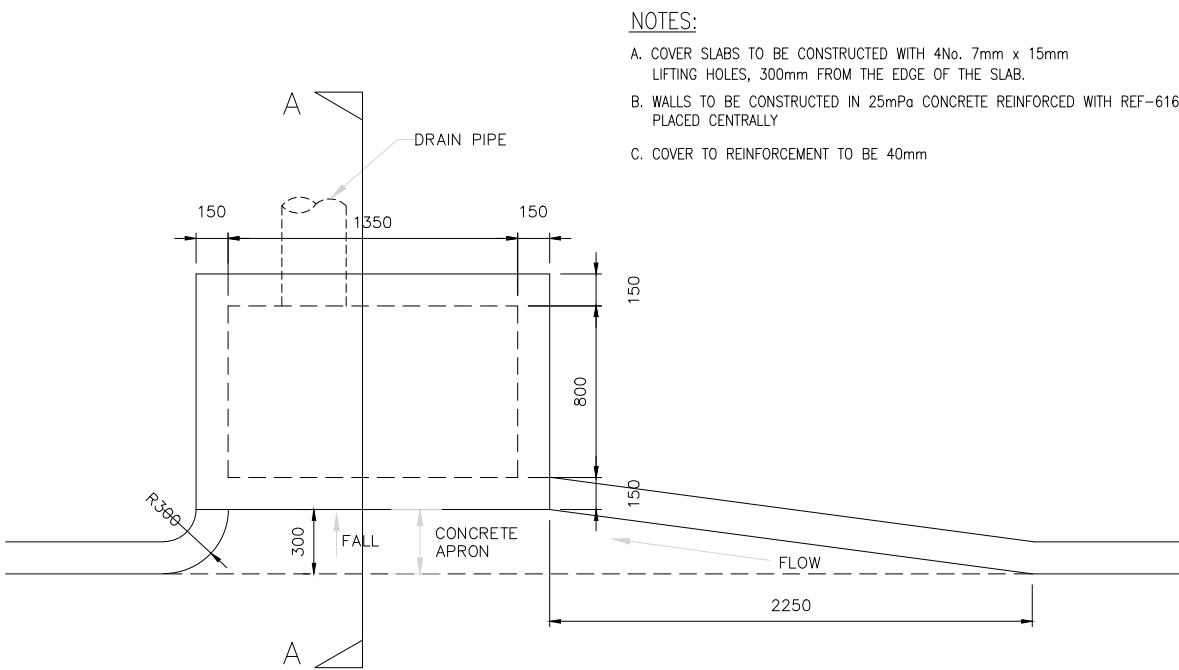
TYPICAL CATCHPIT CROSS SECTION
SCALE 1:25



TYPICAL COVERED U-DRAIN CROSS SECTION
SCALE 1:25

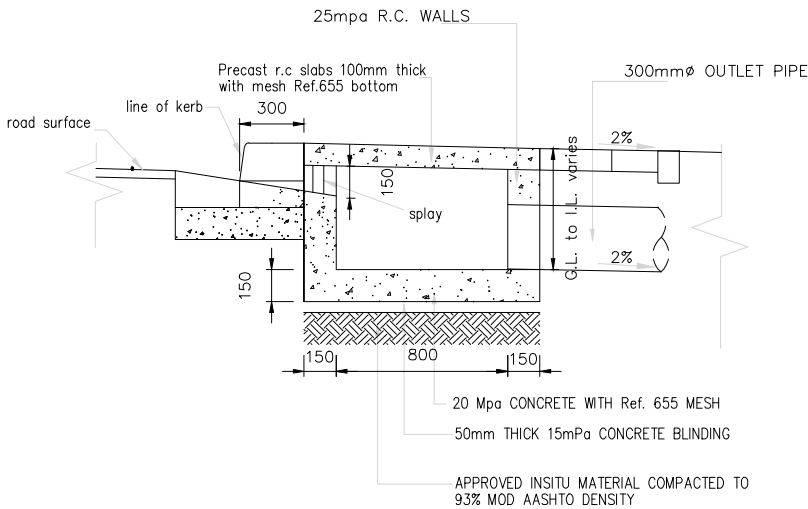
NOTES:

1. BASES, WALLS, COVER SLAB AND CONCRETE PITCHING TO BE CONSTRUCTED IN CLASS 25/19 CONCRETE.
2. BASES TO BE REINFORCED WITH MESH REF A 395 PLACED CENTRALLY.
3. WALLS TO BE REINFORCED WITH DOUBLE MESH REF617 PLACED CENTRALLY.
4. COVER SLAB TO BE REINFORCED TOP AND BOTTOM WITH Y12-200 IN BOTH DIRECTIONS.
5. COVER REINFORCEMENT TO BE 40mm.
6. BLINDING TO BE 50mm THICK, CLASS 15/19 CONCRETE PLACED ON TOP OF APPROVED INSITU MATERIAL COMPACTED TO 93% MOD. AASHTO DENSITY.
7. U-DRAIN TO BE CONSTRUCTED IN ALTERNATE SECTIONS OF MAX LENGTH 6.0m.
8. CONSTRUCTION JOINTS TO BE 10mm THICK POLYFOAM JOINT FILLER SEALED WITH POLYSULPHIDE JOINT SEALER.
9. REMOVABLE COVER SLABS FOR U-DRAINS TO HAVE LIFTING HOOKS.
10. COVER SLABS FOR U-DRAINS TO BE 500mm LONG.



PLAN
1:15

KERB INLET DETAIL



CROSS SECTION A-A
1:15

NOTES:

- A. COVER SLABS TO BE CONSTRUCTED WITH 4No. 7mm x 15mm LIFTING HOLES, 300mm FROM THE EDGE OF THE SLAB.
- B. WALLS TO BE CONSTRUCTED IN 25mPa CONCRETE REINFORCED WITH REF-616 MESH PLACED CENTRALLY
- C. COVER TO REINFORCEMENT TO BE 40mm

DESIGNED B.D	DRAWN B.N	CHECKED T.T.M	REVIEWED ***	APPROVED ***
DATE MAY 2021	DATE MAY 2021	DATE MAY 2021	DATE MAY 2021	DATE MAY 2021
REVISION				MARK
STAGE 2 PRELIMINARY DESIGN				0
STAGE 3 FINAL DESIGN				0
				DATE
				MAY. 2021
				BY
				T.T.M
				T.T.M

DRAWING TITLE			
STORMWATER CATCHPITS AND KERB INLET DETAIL			
SCALE: 1:50	CONTRACT: SADC/RLD CONST/01	DRAWING No. BL813/800-05	REV 0